



## Getting the most out your Funk Firm Gett! (Including F7 tonearm and Ortofon Red cartridge/stylus)

This turntable has been pre-setup with correct settings for:

- Speed for 45 and 33½ (strobe tested)
- Tracking force (weight) 1.80g (suitable for the Ortofon 2M Red)
- Bias adjusted for the above tracking force
- Achromat pre-installed

**POST TRANSIT: A 40mm transit screw, cable tie and yellow spacer have been installed to protect the tonearm. Please remove these before you start your setup. You will also need to remove the tape holding the platter to the table.**

To use the turntable, you will need to connect it to a moving magnet (MM) amplifier or sound stage.

---

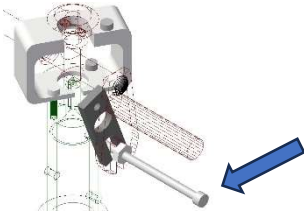
### Quick Setup

#### Connections

1. Connect AC power plug to Smoothie Power Supply unit and wall socket.
2. Connect Smoothie power supply unit to the Turntable (the female socket is under the turntable, below the speed selection knob).
3. Connect the RCA cables and ground wire coming from below the tonearm to the amplifier/sound stage.

#### Install the belt and check your setup!

4. Ensure that unscrew and remove the transit lock screw.



5. Remove the yellow spacer, cut and remove the black cable tie from the tonearm clip and remove the clear tape holding the platter.

6. Install the belt.

**Fitting the belt:** (Right-handed) Start by dropping the belt over the record spindle opposite the motor pulley. With the left hand, place and gently hold the belt in the groove of the pulley itself. With the right hand and keeping the belt taut with respect to pulley and platter feed the belt smoothly around the platter, either with the platter stationary or using the right hand to simultaneously hold the belt in situ whilst rotating the platter all the way round till it meets up with the pulley. Sounds more complicated than it is. A little bit of practise and it is in fact very straightforward.

7. Turn on the power supply. Turn the turntable power/speed knob to 33, to power on the turntable motor.



*Power/Speed knob and belt setup*

**Please Note:** if the platter does not spin, please check your connections, that the wall socket is switched on and the belt is in the correct position.

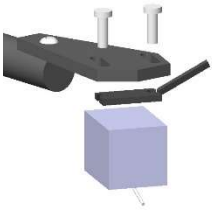
8. Remove the stylus guard from your Ortofon cartridge. **You're all set! Happy listening!**

## Instructions for tweaks and enhancements

Note: *It is always a good idea to put on the stylus cover/guard EACH time you make adjustments to the tonearm or anything on it, to prevent costly accidents.*

### Cartridge replacement

Start by carefully unpacking all components. If supplied use the stylus guard. **Always lift the cartridge off the record before making new adjustments.**



You may find it easier to remove the headshell first before fitting the cartridge. Connect the cartridge tags carefully to the cartridge, following convention:

**Red:** Right Positive - **Green:** Right Ground - **White:** Left Positive - **Blue:** Left Ground

If in doubt, consult a dealer or qualified technician. Re-fit the headshell to the arm. At this stage tighten lightly. screw the counterweight onto the rear shaft.

**Cartridge "Overhang" Adjustment:** Fit the alignment gauge over the record spindle. Slide the cartridge forwards or backwards in the headshell until the sides of the cartridge body are parallel to the lines and with the stylus point in the middle of the cross. Tighten the cartridge screws. Do NOT over tighten.

### Applying the desired tracking weight

Rotate the counterweight at the back end of the tonearm to set the downforce. You will need to slightly unscrew the small grub screw, which is holding the counterweight, stopping it from sliding. Depending on the weight required for the cartridge, screw one or both, the main counterweight and the black plastic round lock nut. With the black screw against the counterweight, the two will "lock" together and turn smoothly. Measure the weight of the tonearm at the stylus contact point, using a balance/scale.

If you don't have a balance/scale,

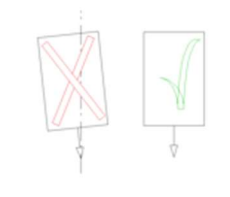
Remove the stylus cover/guard, release the arm from its rest and position it mid-way between the rest and the platter so it is free to move up and down. Adjust the counterweight until the arm balances (floats). When it balances, the weight is 0 grams. You can then rotate the counterweight to set the downforce. 1 gram = 1 turn.

### Setting the azimuth



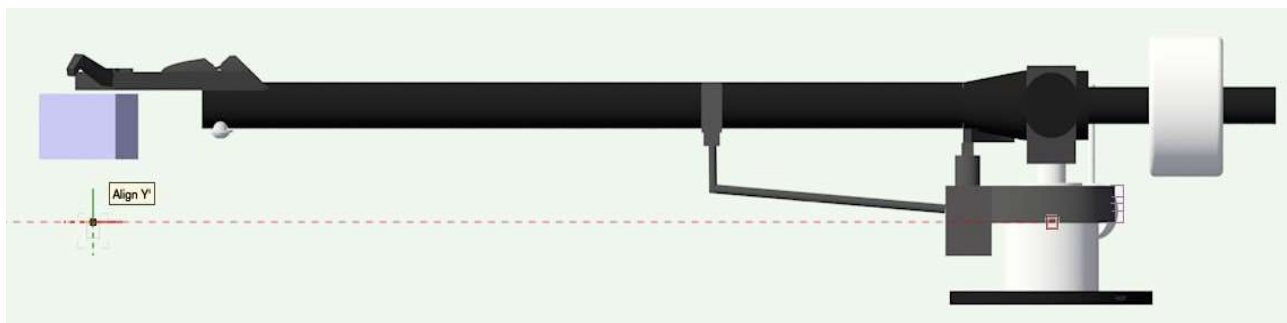
Sometimes, looking at a cartridge from the front, the stylus does not sit squarely in the groove, this error is called Azimuth.

**To set the azimuth,** Remove the mat. Lower the cartridge onto the platter and view the cartridge reflection from the front. Insert a 1.5mm hex key into the grub screw in the rear of the Bias knob. Viewing the cartridge from the front, turn the key very gently until the cartridge is vertical. The base of the cartridge should be horizontal and parallel to its reflection.



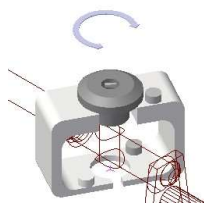
### **Vertical Tracking Angle (VTA)**

Correct VTA occurs when the arm is parallel to the record. Unlock the pillar using the hex key into the screw in the side of the plinth. Unscrewing it will free the arm, allowing it to be move up or down. Pull or push the pillar gently, to set the height of the arm. With a record on the platter, lower the stylus and view the arm from the side. Raise or lower the arm as necessary until it is parallel and tighten the VTA screw with the hex key to relock it. Do NOT over tighten.



### **Setting the bias**

For any pivoted arm, minimising distortion requires the stylus follows a line which goes past the spindle. Poor tracking causes excessive, unequal stylus wear on one side and may cause or lead to distortion in sound (usually on one side, the left or right). Unfortunately, each set up is slightly different, bias, therefore, benefits from a bespoke approach.



Select a record with a wide and flat lead out groove area.  
Start the turntable.

Lower the stylus onto the "land" or unrecorded flat area section at the end of the record.

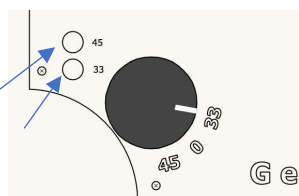
Unscrew the Bias knob (anticlockwise) to increase the bias or screw in (clockwise) to decrease bias until the stylus "floats" on the plastic, i.e. it does not move inwards nor pull back outwards, until it is picked up by the lead out groove.

### **Fitting the belt** (Right-handed)

Start by dropping the belt over the record spindle opposite the motor pulley. With the left hand, place and gently hold the belt in the groove of the pulley itself. With the right hand and keeping the belt taut with respect to pulley and platter feed the belt smoothly around the platter, either with the platter stationary or using the right hand to simultaneously hold the belt in situ whilst rotating the platter all the way round till it meets up with the pulley. Sounds more complicated than it is. A little bit of practise and it is in fact very straightforward. See website for when a fitting video is available.

### **Adjusting platter rotation speed**

The speed can be varied and adjusted from above via the two small holes using a small jeweller's cross-head (Phillips) screwdriver.



### **Armrest grip**

The black armrest clip can be rotated to vary the grip to the tube as desired.

